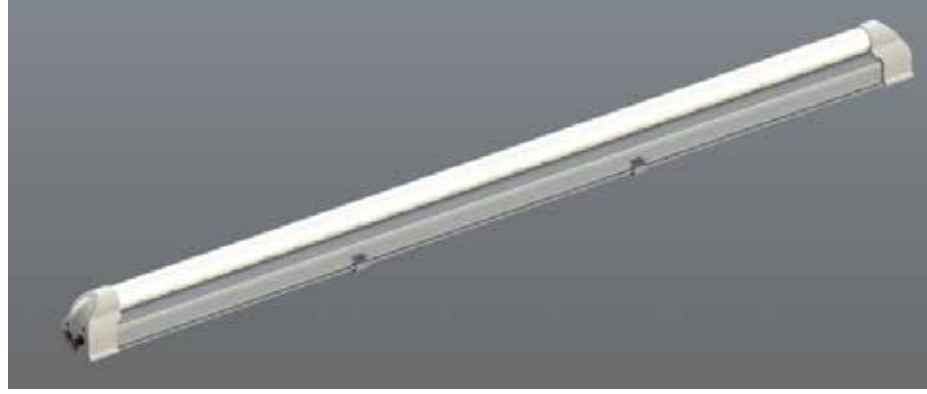


OMEGA LIGHTING



LINEAR ARMATURES

T5 Type Linear Armatures

GENERAL SPECIFICATIONS

Linear armatures which provides correct lighting with high component quality and impressive design

Certified quality conforming to international standards

High energy saving level by high optical and electrical efficiency

UV free lighting

Healthy lighting with low flicker level (> %10)

Expected driver life time up to 50.000 hours and LED life time up to 70.000 hours

Perfect protection from risk of the fire, electric shock and electromagnetic radiation; by conforming to CE(LDV, EMC, RoHS) standards

Endwise option with connection tool

Minimum 100 Lm/W system output lumen efficiency

High color accuracy: CRI>80

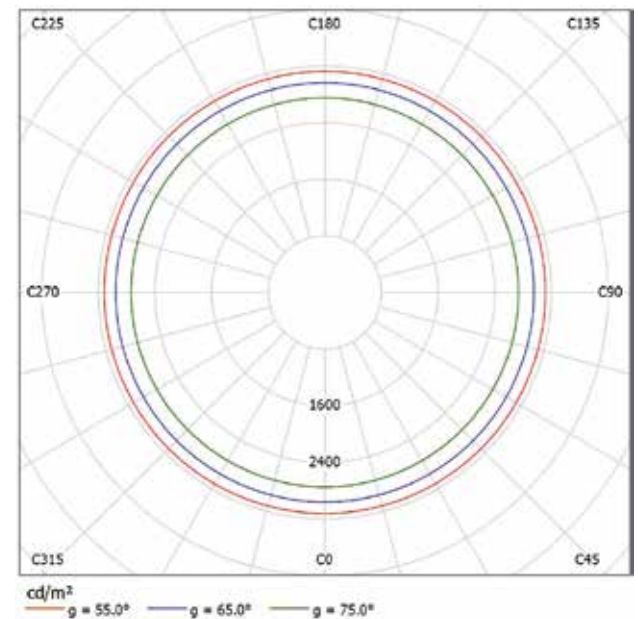
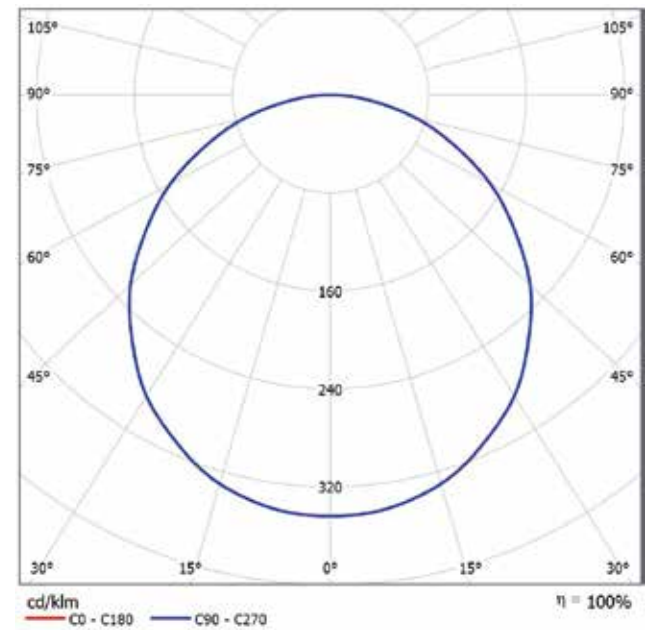
High power factor: >0,95

Drivers compatible with DALI control systems

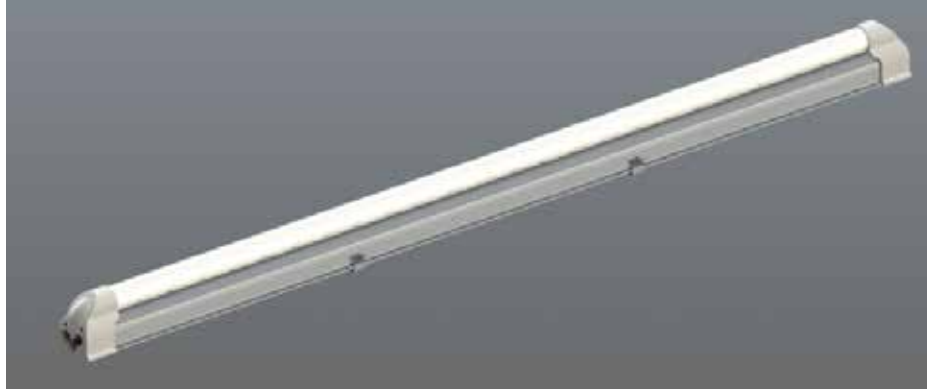
Wide working temperature: -20°C / +40°C

5 year warranty option

PHOTOMETRIC CURVE



OMEGA LIGHTING



LINEAR ARMATURES

T5 Type Linear Armatures

TECHNICAL SPECIFICATIONS AND ORDER CODES

PRODUCT CODES	INPUT POWER	LUMEN OUTPUT	COLOR TEMPERATURE	ASSEMBLY TYPE	MECHANICAL DIMENSIONS	WEIGHT (NET / GROSS)
351.007.123	7 W	700 Lm	3000°K	T5	639 x 34 x 26 [mm]	190 / 200 [gr]
351.007.124	7 W	700 Lm	4000°K	T5	639 x 34 x 26 [mm]	190 / 200 [gr]
351.007.125	7 W	700 Lm	5000°K	T5	639 x 34 x 26 [mm]	190 / 200 [gr]
351.010.133	10 W	1000 Lm	3000°K	T5	939 x 34 x 26 [mm]	290 / 310 [gr]
351.010.134	10 W	1000 Lm	4000°K	T5	939 x 34 x 26 [mm]	290 / 310 [gr]
351.010.135	10 W	1000 Lm	5000°K	T5	939 x 34 x 26 [mm]	290 / 310 [gr]
351.014.143	14 W	1400 Lm	3000°K	T5	1239 x 34 x 26 [mm]	385 / 420 [gr]
351.014.144	14 W	1400 Lm	4000°K	T5	1239 x 34 x 26 [mm]	385 / 420 [gr]
351.014.145	14 W	1400 Lm	5000°K	T5	1239 x 34 x 26 [mm]	385 / 420 [gr]
351.018.153	18 W	1800 Lm	3000°K	T5	1539 x 34 x 26 [mm]	480 / 520 [gr]
351.018.154	18 W	1800 Lm	4000°K	T5	1539 x 34 x 26 [mm]	480 / 520 [gr]
351.018.155	18 W	1800 Lm	5000°K	T5	1539 x 34 x 26 [mm]	480 / 520 [gr]